

S.W. 1/4 OF SECTION 29, T.7N., R.1W., S.L.B. & M.

IN NORTH OGDEN CITY, TOWN OF PLEASANT VIEW, WEBER COUNTY

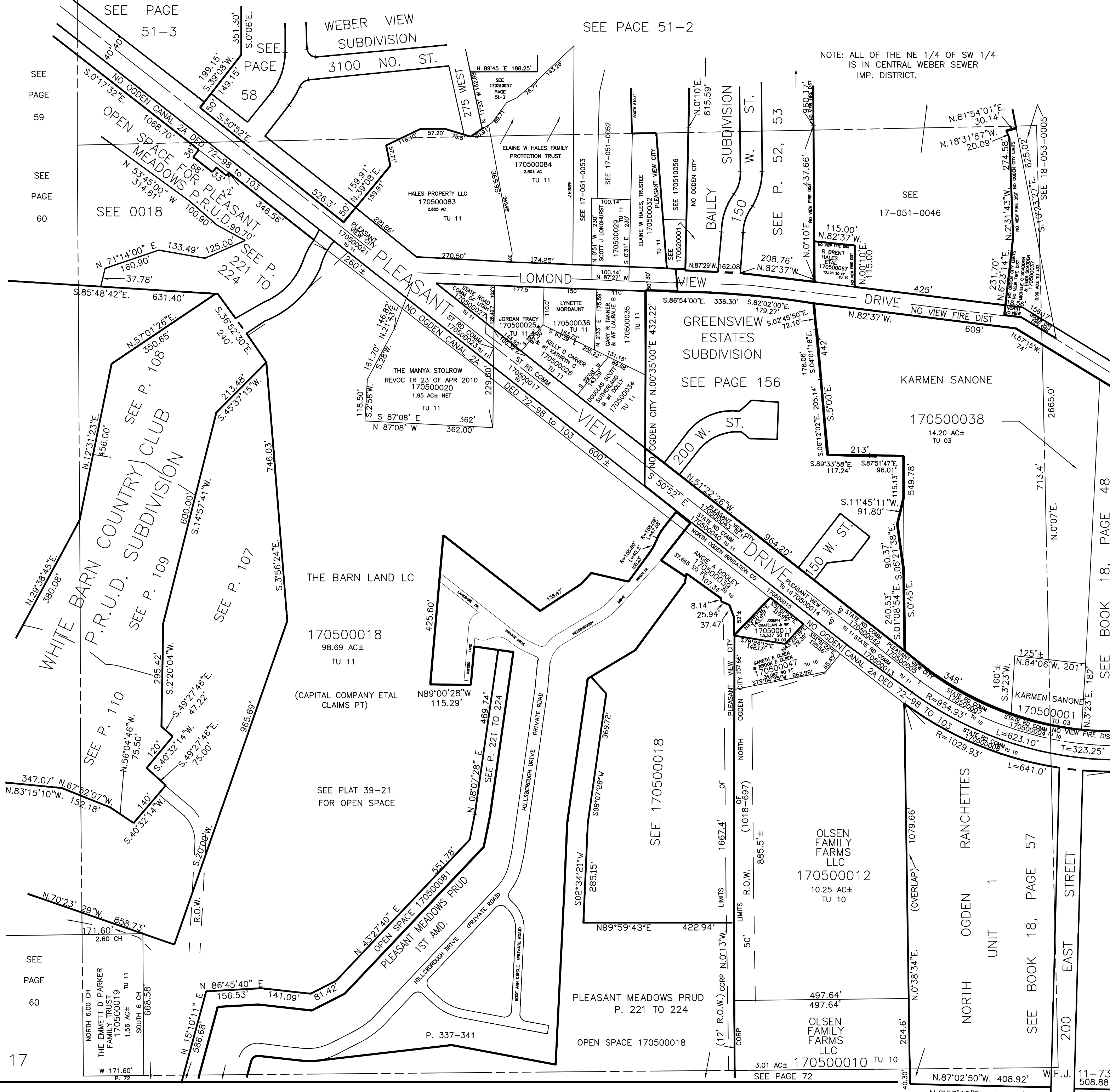
SCALE 1" = 200'

TAXING UNIT: 03, 10, 11, 433

SEE PAGE 51-3

SEE PAGE 51-2

NOTE: ALL OF THE NE 1/4 OF SW 1/4 IS IN CENTRAL WEBER SEWER IMP. DISTRICT.



SEE PAGE 59  
SEE PAGE 60

SEE 0018

SEE P. 108  
SEE P. 109

SEE P. 107

170500018

170500026

SEE 170500018

170500012

170500038

170500001

170500004

170500005

170500006

170500007

170500008

170500009

170500010

170500011

170500012

170500013

170500014

170500015

170500016

170500017

170500018

170500019

170500020

SEE PAGE 60

SEE BOOK 18, PAGE 57

SEE BOOK 18, PAGE 48

SEE PAGE 72

SEE PAGE 72

SEE PAGE 72

SEE PAGE 72

SEE PAGE 72

SEE PAGE 72